

ISUZU

REAL DEALS

JULY | AUGUST | SEPTEMBER 2026

NEWS FEATURE

Isuzu Trucks National Road Show

The biggest Isuzu Trucks
journey in history.
15,000 km across
Australia, showcasing
the all-new MY25 range.

Page 8 - 9



ENTER THE DRAW TO WIN

Isuzu Arcade Barrel

When you purchase
20L or more of Isuzu
Genuine Lubricants in
a single transaction
from an Authorised
Isuzu Trucks Dealer.

Page 28



Scan QR
code for an
e-version of
Real Deals



Qantas Business Rewards Trade Mate

Thanks to our partnership with Qantas Business Rewards, your business can earn Qantas Points as an Isuzu Trade Mate*. When you become an Isuzu Trade Mate member your business will earn 1 Qantas Point for every dollar you spend on eligible Isuzu Truck parts or accessories purchased from participating authorised Isuzu Dealers.

Apply now to earn Qantas Points for your business*.

*Terms and Conditions apply.

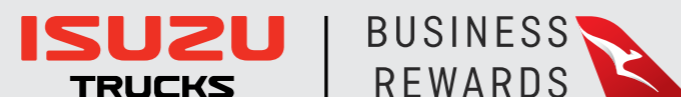


To find out more scan the code or visit www.isuzu.com.au/our-range/parts/isuzu-trade-program/



Reward your business for purchasing Isuzu Truck parts and accessories...

Your business can use Qantas Points earned on a range of rewards including booking flights, upgrades and more. Or you can transfer your business's Qantas Points to any Qantas Frequent Flyer account to use on car hire, hotels, wine or choose from over 20,000 products at the Qantas Marketplace*.



ISUZU GENUINE PARTS

Earn Triple Qantas Points on these Isuzu Genuine EGR & Turbocharger Kits.*

EGR Valve & Cooler Kit

Kit includes: EGR Valve, EGR Cooler/s, Gaskets & Hardware for installation

92959621	NL*/NM*/NN* with 4JJ1 Engine (EURO 5) MY2010-Current	\$638.75
92959622	NN*/NP*/NQ* with 4HK1 Engine (EURO 5) MY2010-2017	\$1,246.70
92959623	NN*/NP*/NQ* with 4HK1 Engine (EURO 5) MY2018-Current	\$1,318.90



Turbocharger Kit

Kit includes: Turbocharger Assembly, Gaskets & Hardware for installation

92959619	NL*/NM*/NN* with 4JJ1 Engine (EURO 5) MY2010-Current	\$2,139.95
92959620	NN*/NP*/NQ* with 4HK1 Engine (EURO 5) MY2010-Current	\$2,300.30



Members of the Qantas Business Rewards program are eligible to earn triple Qantas Points when they purchase any advertised Genuine Turbo & EGR Kits from Real Deals Q3 2026 between 1 July 2026 and 30 September 2026, 3 points per dollar spent.

To redeem your bonus Qantas Points, please scan the below QR code or go to www.isuzu.com.au/our-range/parts/isuzu-trade-program and complete the form to ensure that the points are credited to your Qantas Business Rewards account.



N-SERIES Genuine Parts

For genuine peace of mind, maintain your Isuzu N-Series Truck by using Isuzu Genuine Parts which are developed and manufactured to stringent quality standards, providing you with maximum productivity, performance, and future re-sale value. All backed by a 12-month unlimited kilometre parts-only warranty, or 3-year unlimited kilometres parts & labour warranty when fitted by an authorised Isuzu Trucks dealer, because reliability is everything!

Disc Brake Pad Kits

8982169240	NL* MY2008-Current - Steer Axle	\$260.60
8982169220	NN*/NPR MY2008-Current - Steer/Drive Axle	\$205.25
8982169210	NN*/NL* MY2008-Current - Drive Axle	\$260.10
8972116910	NQ* MY2008-Current - Steer Axle	\$272.85
8983350840	NQ* MY2008-Current - Drive Axle	\$392.35



Disc Brake Rotors

8981710330	NL* MY2008-Current - Steer Axle	\$377.10
8973872290	NN*/NPR MY2008-Current - Steer Axle	\$225.85
8982488970	NN*/NL* MY2008-Current - Drive Axle	\$211.95
8982488980	NP* MY2008-Current - Drive Axle	\$244.25
8981052720	NQ* MY2008-Current - Steer Axle	\$411.00
8982927430	NQ* MY2008-Current - Drive Axle	\$340.40



Brake Shoes & Drums

5878323750	NPS MY2008-2024 Steer Axle Shoe Kit (includes 4 x Shoes 8983485800)	\$496.50
5878317750	NPS MY2008-2024 Drive Axle Shoe Kit (includes 4 x Shoes 8972010610)	\$340.00
8982927610	NPS MY2008-2024 Steer Axle Brake Drum	\$218.00
8970812192	NPS MY2008-2024 Drive Axle Brake Drum	\$324.15



Clutch Disc

8982551391	NL*/NM*/NN* with 4JJ1 Engine & MYY Transmission MY2011-2024	\$367.45
8982551401	NP*/NQ* with 4HK1 Engine & MYY Transmission MY2011-2024	\$332.95
8981649171	NP*/NQ* with 4HK1 Engine & MZZ Transmission MY2011-2024	\$222.80



Clutch Pressure Plate

8980400932	NL*/NM*/NN* with 4JJ1 Engine & MYY Transmission MY2011-2024	\$473.25
8970388314	NP*/NQ* with 4HK1 Engine & MYY/MZZ Transmission MY2011-2024	\$410.45

Front Bumper Assembly

8974068204	NL*/NM* MY2008-2024	\$282.40
8974056355	NN*/NP*/NQ* MY2008-2024 (excluding Foglamps)	\$291.60
8974056285	NN*/NP*/NQ* MY2008-2024 with Foglamps	\$517.30

Tradepack & Traypack 'Ready to Work' Parts

To suit NLR/NLS/NNR/NPR Traypack & Tradepack 'Ready to Work' trucks, model year 2015-2024.

PIADQTJ328ISU	Tailgate 1983mm (Wide) x 328mm (Height) NLR/NLS MY2015-2024	\$636.90
PIADQTM328K2	Tailgate 2110mm (Wide) x 328mm (Height) NNR/NPR MY2015-2024	\$645.15
PIAQDLK	Quick Lock Latch Kit MY2015-2024	\$74.40
PIQHSP01	Quick Lock Hinge Set MY2015-2024	\$104.70
PIELP57L	LHS Tail Light Protector MY2015-2024	\$338.25
PIELP57R	RHS Tail Light Protector MY2015-2024	\$338.25
PIMGS015	Mudguard Set MY2019-2024	\$280.10
PITBAS007L	Stirrup LHS MY2015-2024	\$410.65
PITBAS007R	Stirrup RHS MY2015-2024	\$410.65
92957262	Slide Out Step Assembly MY2015-2024	\$533.50

Heavy Duty Ladder Racks

92958595	NNR Traypack & NPR Tradepack Model (Rack Width 2122mm) MY2015-2024	\$2,344.40
92958596	NLR & NLS Traypack Model (Rack Width 1995mm) MY2015-2024	\$2,336.10



GENUINE Major assemblies

For genuine peace of mind, maintain your Isuzu Truck by using Isuzu Genuine Major Assemblies which are developed and manufactured to stringent quality standards, providing you with maximum productivity, performance, and future re-sale value. All backed by a 12-month unlimited kilometre parts-only warranty, or 3-year unlimited kilometres parts & labour warranty when fitted by an authorised Isuzu Trucks dealer, because reliability is everything!

Engine Assembly

8982866760	4JJ1 Euro 5 Engine for NLR with Automated-Manual Transmission (AMT)	\$17,498.35
8983483870	4HK1 Euro 5 Engine for NPR MY2015-2024	\$17,974.65
1100626660	6HK1 Euro 5 Engine for FV* with Manual Transmission	\$33,491.30
1100651060	6HK1 Euro 5 Engine for FS* with Manual Transmission	\$33,652.40



Transmission Assembly

8983288180	MYY6E Automated-Manual Transmission (AMT) for N-Series MY2015-2024 with 4JJ1 Engine	\$11,670.90
8983363630	MYY5A Manual Transmission for NPS 4x4 MY2017-2024 with 4HK1 Engine	\$13,047.35
8980669390	MZZ6F Automated-Manual Transmission (AMT) for N-Series MY2011-2024 with 4HK1 Engine	\$14,638.10
8981345860	MWZ6P Manual Transmission for FR*/FS* MY2008-2015 with 4HK1 Engine	\$16,571.30



Final Drive Assembly (Differential)

8980933770	N-Series MY2015-2024 with 39/7 Ratio	\$5,258.00
1410032540	FRR MY2008-2024 with 41/8 Ratio	\$6,456.55
8980659740	NPS 4x4 MY2008-2024 with 41/8 Ratio LSD	\$6,209.65
8973887000	NPR/NQR MY2008-2024 with 41/10 Ratio	\$3,993.15



BENEFITS OF ISUZU GENUINE PARTS PURCHASED THROUGH THE AUTHORISED DEALER NETWORK.

Isuzu Genuine parts, are components made by Isuzu, for Isuzu Trucks.

The key benefits include:

- Assured Quality and Performance
- Long-Term Value
- Peace of Mind
- Warranty Protection

WARRANTY DETAILS.

The warranty for genuine parts can vary depending on how they are purchased and installed.

- 12-Month Warranty Over-the-Counter
- 36-Month Warranty When Installed in an Authorised Isuzu Dealer Workshop

DEALERSHIP NETWORK.

The existence of a nationwide dealership network, with 74 locations, provides significant advantages to customers:

- Widespread Accessibility
- Expert Service
- Consistent Quality
- Ease of Warranty Claims

Isuzu ATF Syn HD with Allison Transmission TES 668® Approval



GENUINE LUBRICANTS

Isuzu ATF Syn HD is a meticulously engineered synthetic fluid using premium-quality base oils combined with advanced additive technology, specifically tailored to address the stringent requirements of the Allison Transmission TES 668® specification.

The formulation underwent comprehensive testing in accordance with the rigorous Allison evaluation programme, demonstrating superior thermal stability, oxidation resistance, and wear protection. As a result of meeting and exceeding these performance benchmarks, Isuzu ATF Syn HD has received formal approval for use under the Allison Transmission TES 668®

standard (Approval Number: 668-10562025) and carries the certification mark, offering customers enhanced reliability and optimal transmission performance in demanding operating environments.

Suitable for use in Allison 1000 Series™, 2000 Series™, 3000 Series™, 4000 Series™, and H 40/50 EP™ on-highway products

Isuzu ATF Syn HD

92959554	20 Litre	\$363.00
92959555	205 Litre	\$3,474.80



Allison Genuine Parts™ Filter Kits

29558329	3000/4000 Series with 4" Oil Pan	\$175.10
29539579	1000/2000 Series with External Spin-On Filter	\$30.10
29558328	3000/4000 Series with 2" Oil Pan	\$176.95





Isuzu Trucks Covers All Corners in Marathon Roadshow

Isuzu Australia Limited is marking the first year of sales of the all-new MY25 Isuzu truck range with a national roadshow visiting dealerships and customers around the country.

The tour kicks off on Monday 20 April, and will traverse some 15,000 km of the nation's highways and byways over the months-long journey.

According to IAL Head of Marketing & Customer Experience, Mr John Walker, the roadshow has been designed to showcase the top-end of the new Isuzu truck range.

"We've selected two key models as the flagship trucks for our national roadshow - one from our heavy-duty twin-steer FY range and a further from our heavy-duty FX range.

"Of course, we're the truck of choice for more Australian businesses due to the whole of our range and so we've also included the access all areas NKR and our all-terrain NMS all-wheel-drive light-truck models along for the ride," he said.

The Grand Tour

Isuzu Trucks has run national cavalcades in various guises in the past, and the 2026 iteration is built around a sales training program that will be rolled out to the Isuzu dealer network as part of the roadshow.

"We have our Sales Product Trainer, Tim Richardson leading the roadshow as he rolls out our sales training on the new model range to sales consultants across the Isuzu dealer network," Mr Walker said.

"With over 200 models in our new range, ensuring that we build up comprehensive product, specification and

importantly, detailed understanding of the features and benefits of this generational change-over is critical to our ongoing sales success," he said.

"We've been the top-selling truck make in Australia for 37 years* and key to this is the superior product knowledge and support of our sales network.

"As our tagline states - Reliability is Everything, and our dealer network exemplifies this with their product expertise and support.

More truck owners and operators have relied on Isuzu over the past three decades than any other brand and we're determined to continue this track record with our new range," Mr Walker said.

The Roadshow scheduled to pass through most Isuzu dealership towns.

Dealer Spotlight

With the roadshow scheduled to pass through most Isuzu dealership towns, Isuzu dealers have planned activities for their local customer base to showcase the new range to new and existing customers alike.

"In my role as Sales Product Trainer, I get to spend time with the Isuzu dealer sales network highlighting the key specifications and features of our extensive truck range, and how they can make an operator's day more productive, efficient, safer and more comfortable," said Mr Richardson.

"With so many new and additional features in our latest range, taking the training on the road and presenting in a hands-on mode gives us all the critical up close and personal time with the trucks," he continued.

"This way we can impart as much information as possible in a concentrated time, and with everyone in the same room.

Whilst big advances have been made in technology to enhance remote meetings, there's nothing quite like the face-to-face experience to really get the message across and develop greater understanding and knowledge.

"It's the same as the value a customer gets from a test drive over just looking at the specification on a screen," continued Mr Richardson.

"As we like to say at Isuzu, it's the feel behind the wheel that seals the deal!"

And with the roadshow scheduled to visit most Isuzu dealer locations, there's the opportunity for interested customers to check out the new models and take one for a test drive themselves.

Fleet Configuration

The core roadshow fleet consists of four all-new MY25 Isuzu truck models:

- FYJ 320-355, rated at 32 tonnes GVM, fitted with a CTE tilt tray and towing a bogie axle tag trailer.
- FXD 170-260, rated at 17 tonnes GVM, fitted with a tray body.
- NKR 45-150, rated at 4.5 tonnes GVM, fitted with a steel tray.

- NMS 65-150 All-Wheel Drive Ready-to-Work
- Servicepack-X, rated at 6.5 tonnes GVM and equipped with a fully optioned service body, including toolboxes, inverter and microwave.

All Corners Covered

The roadshow is scheduled to commence on April 20 and departs from Major Motors, Forreestfield, WA, with the first stop scheduled in Adelaide on 23 April.

From there the convoy heads north via some of the most iconic outback spots before hitting Darwin and then spearing directly east for Cairns and tracking down the eastern seaboard before wrapping up eventually in Tasmania.

Over the seven month, 15,000km journey, all corners of the continent are covered and Isuzu truck fans can track the epic journey by keeping an eye on the Isuzu social channels and our dedicated webpage at www.isuzu.com.au/news-events/2026-national-roadshow/

*According to T-Mark reports issued by the Truck Industry Council (TIC), owner and compiler of Australia's official T-Mark truck sales database.



Scan QR code to find your perfect truck

With so many new features across the latest range, taking the training on the road and presenting it in a hands-on environment gives everyone valuable time with the trucks.



F / FX / FY-SERIES

Genuine Parts

For genuine peace of mind, maintain your Isuzu F/FX/FY-Series Truck by using Isuzu Genuine Parts which are developed and manufactured to stringent quality standards, providing you with maximum productivity, performance, and future re-sale value. All backed by a 12-month unlimited kilometre parts-only warranty, or 3-year unlimited kilometres parts & labour warranty when fitted by an authorised Isuzu Trucks dealer, because reliability is everything!



ISRI® 6860/875 NTS Air Seat Assembly

Advanced design incorporating third generation suspension technology ensures maximum safety and comfort. Efficient operating weight range of 50 to 150 kg, integrated 3-point seat belt, integrated head restraint, adjustable vertical shock absorber, integrated pneumatic system (IPS) dual stage air lumbar with lateral support and anatomically shaped cushion and backrest foams are just some of the standard features in the ISRI 6860/875.

8981950633 F*/FX*/FY* MY2008-2024 - Driver Seat Assembly **\$3,575.00**

Front Door Panel Assembly

Excludes Trim Panel & Window Regulator/Motor.

8982605980 All F-Series MY2008-2026 - Left Hand Side **\$734.50**

8982605971 All F-Series MY2008-2026 - Right Hand Side

Front Door Glass

Includes glass holder clips

8983912120 All F-Series MY2008-2024 - Left Hand Side **\$262.90**

8983912110 All F-Series MY2008-2024 - Right Hand Side

Window Regulator Assembly

Includes power window motor

8980292374 All F-Series MY2008-2026 - Left Hand Side **\$204.85**

8980292364 All F-Series MY2008-2026 - Right Hand Side



Brake Shoes

1471704830 FR* MY2008-Current - Steer Axle (Qty 4 required per Axle) **\$180.10**

1471704851 FR* MY2008-Current - Drive Axle (Qty 4 required per Axle) **\$218.55**

1471209991 FS* MY2008-Current - Steer Axle (Qty 4 required per Axle) **\$175.05**

1471700030 FS* MY2008-Current - Drive Axle (Qty 4 required per Axle) **\$228.45**



Brake Drum

1423153951 FR* MY2008-Current - Steer Axle (Drum Size 320 x 120mm) **\$304.50**

1423153610 FR* MY2008-Current - Drive Axle (Drum Size 320 x 145mm) **\$209.95**

1423154150 FS* MY2008-Current - Steer Axle (Drum Size 370 x 150mm) **\$553.60**

8980857270 FS* MY2008-Current - Drive Axle (Drum Size 370 x 150mm) **\$381.65**



Radiator Grille Assembly

8982508291 FR*/FS* MY2016-Current - Chrome **\$897.10**

8982508331 FT*/FV* MY2016-Current - Chrome **\$715.90**

8974685620 FX*/FY* MY2017-Current - Chrome **\$754.00**

Front Bumper Assembly

8979016270 FR*/FS* MY2008-Current (excluding FSS) **\$459.70**

8974099031 FT*/FV*/FX*/FY* MY2008-Current (excluding FTS) **\$696.00**

Headlight Assembly

8982413260 FR*/FS* MY2008-2021 - Left Hand Side **\$146.30**

8982413250 FR*/FS* MY2008-2021 - Right Hand Side

8983536072 FR*/FS* MY2022-2024 - Left Hand Side with LED Main Beam **\$698.20**

8983536082 FR*/FS* MY2022-2024 - Right Hand Side with LED Main Beam

8982413110 FT*/FV*/FX*/FY* MY2008-2021 - Left Hand Side **\$220.10**

8982413100 FT*/FV*/FX*/FY* MY2008-2021 - Right Hand Side

8983244892 FT*/FV*/FX*/FY* MY2022-2024 - Left Hand Side with LED Main Beam **\$660.45**

8983244882 FT*/FV*/FX*/FY* MY2022-2024 - Right Hand Side with LED Main Beam

Front Turn Signal Lamp Assembly

8975579110 FRR/FSR MY2022-2024 - Left Hand Side **\$137.60**

8975579100 FRR/FSR MY2022-2024 - Right Hand Side

8982386310 FT*/FV* MY2008-2024 - Left Hand Side (Combination Fog/Turn Lamp) **\$141.55**

8982386300 FT*/FV* MY2008-2024 - Right Hand Side (Combination Fog/Turn Lamp)

8982386260 FX*/FY* MY2008-2024 - Left Hand Side (Combination Fog/Turn Lamp) **\$148.20**

8982386250 FX*/FY* MY2008-2024 - Right Hand Side (Combination Fog/Turn Lamp)

All Makes

ISRI® 6860/870 Pro Air Seat Assembly

8911005	Drivers Side Seat in Charcoal Cloth - Suits most Kenworth, Freightliner & Western Star vehicles.	\$3,324.70
---------	--	-------------------



SKF® Brakemaster Turbo-2000 Air Dryer

620300	Air Dryer Assembly - 12 Volt System	\$809.70
T2000SK-P	Service Kit includes Desiccant Cartridge, Replacement Valves & Seals	\$341.35
T224-P	Desiccant Cartridge - Filtration Plus	\$185.70



SKF® Wheel Bearing & Scotseal Kits

Includes Hub Seal, Inner & Outer Bearing

VKBA5800AU	Steer Axle with Seal 35066/Inner Bearing SET413/Outer Bearing SET406	\$88.30
VKBA5806AU	Drive Axle with Seal 47697/Inner Bearing SET403/Outer Bearing SET401	\$110.20
VKBA5809AU	Trailer Axle with Seal 46305/Inner Bearing SET414/Outer Bearing SET413	\$106.55

Timken® Wheel Bearing Sets

SET401	Outer Bearing Set - R Drive Axle (580/572)	\$69.20
SET403	Inner Bearing Set - R Drive Axle (594A/592A)	\$82.30
SET406	Outer Bearing Set - FF Steer Axle (3782/3720)	\$38.75
SET409	Outer Bearing Set - FF Steer Axle HD (45280/45220)	\$70.05
SET413	Inner & Outer Bearing Set - FF Steer & N Trailer (HM212049/HM212011)	\$56.10
SET414	Inner Bearing Set - N Trailer Axle (HM218248/HM218210)	\$84.85
SET415	Inner & Outer Bearing Set - P Trailer (HM518445/HM518410)	\$97.10



Stemco® Hubcaps & Wheel Seals

343-4009	Trailer Axle 5-1/2" bolt circle	\$34.35
343-4024	Steer Axle 4-1/2" bolt circle	\$68.35
359-5995	Window kit	\$17.30
STM-0723G	Trailer with Parallel Bearing	\$20.80
STM-0743G	Trailer with Tapered Bearing	\$20.50



All Makes

Donaldson® Air Cleaner Elements

P182000	Primary Finned Filter to suit Kenworth, Hitachi & Hino (Fleetguard AF351KM)	\$72.80
P527484	Primary RadialSeal™ Filter to suit Kenworth, Freightliner & John Deere (Fleetguard AF4878)	\$83.45
P153551	Primary Konepac Filter to suit Kenworth, Freightliner & Western Star (Fleetguard AF1968M)	\$91.50
P182066	Primary Finned Filter to suit Kenworth (Fleetguard AF887KM)	\$102.85
P150695	Primary Konepac Filter to suit Freightliner & Mack (Fleetguard AF1969M)	\$115.25



Donaldson® Stepped SealClamp™ Exhaust Clamp (Stainless Steel)

X007784	4"/102mm O.D Pipe	\$17.50
X007785	5"/127mm O.D Pipe	



Donaldson® Flexible Exhaust Tube (Stainless Steel)

J034673	4" (102mm) ID X 36" (914mm) Length	\$111.35
J034674	5" (127mm) ID X 36" (914mm) Length	\$128.30



Fleetguard® PG Platinum Premixed Coolant

CC36082	4 Litre	\$25.00
CC36084	20 Litre	\$123.00
CC36085	208 Litre	\$1,108.00



Dana® King Pin Kits

140KK100	Dana I140/I145/I150 Axles - DX Garlock Bushing	\$452.30
328349	Dana E1002/E1462i Axles - DX Garlock Bushing	\$551.35
328344	Dana E1000/E1320i Axles - DX Garlock Bushing	\$630.00
328347	Dana E1002/E1462i Axles - Bronze Bushing	\$768.35



Spicer® Universal Joint Kits

5280XB	1710 Series Full-Round	
5281XB	1810 Series Full-Round	\$130.00
5676XB	1810 Series Half Round	





Australia



For more information

K-LED QUADRA

WHERE BOLD STYLING MEETS ROBUST PERFORMANCE



Catalogue No	Description	Price
2XD 357 557-001	110mm Beacon, Amber	\$252.25
2XD 357 557-011	110mm Beacon, Dark	\$255.85
2XD 357 558-001	135mm Beacon, Amber	\$273.45
2XD 357 558-101	135mm Beacon, Blue	\$185.95
2XD 357 558-301	135mm Beacon, Green	\$273.45
2XD 357 558-201	135mm Beacon, Red	\$273.45
2XD 357 558-401	135mm Beacon, White	\$273.45

K-LED NANO

THE RIGHT SIGNAL FOR EVERY SITUATION

Catalogue No	Description	Price	Catalogue No	Description	Price
2RL 099 147-001	K-LED 50 Amber rotating Beacon	\$94.35	2XD 066 147-301	K-LED 50 Green flashing Beacon	\$116.60
2RL 099 147-011	K-LED 50 Amber rotating pipe mount Beacon	\$125.85	2XD 066 147-311	K-LED 50 Green flashing pipe mount Beacon	\$133.55
2RL 099 484-001	K-LED 120 Amber rotating Beacon	\$129.70	2XD 066 484-001	K-LED 120 Amber flashing Beacon	\$129.70
2RL 099 979-001	K-LED 80 Amber rotating Beacon	\$120.15	2XD 066 979-001	K-LED 80 Amber flashing Beacon	\$120.15
2RL 099 979-011	K-LED 80 Amber rotating pipe mount Beacon	\$160.25	2XD 066 979-011	K-LED 80 Amber flashing pipe mount Beacon	\$160.25
2XD 066 147-001	K-LED 50 Amber flashing Beacon	\$94.35	2XD 066 979-101	K-LED 80 Blue flashing Beacon	\$148.45
2XD 066 147-011	K-LED 50 Amber flashing pipe mount Beacon	\$125.85	2XD 066 979-211	K-LED 80 Red flashing Beacon	\$170.05
2XD 066 147-101	K-LED 50 Blue flashing Beacon	\$116.60	2XD 066 979-301	K-LED 80 Red flashing pipe mount Beacon	\$148.45
2XD 066 147-201	K-LED 50 Red flashing Beacon	\$116.60	2XD 066 979-311	K-LED 80 Green flashing Beacon	\$170.05
2XD 066 147-211	K-LED 50 Red flashing pipe mount Beacon	\$133.55			



For more information

WORK LAMPS FROM HELLA



Powerbeam S

A series of LED successors to the well known, high quality and yet affordable Powerbeam.

1GA 996 588-001	Close Range 1000 Lumen	\$99.30
1GA 996 588-011	Long Range 1000 Lumen	
1GA 996 588-201	Close Range 1850 Lumen	\$142.55
1GA 996 588-211	Long Range 1850 Lumen	



Module 70 S

A series of LED successors to the well known, high quality and yet affordable Module 70.

1GO 996 776-001	Close Range 1000 Lumen	\$94.50
1GO 996 776-011	Long Range 1000 Lumen	
1GO 996 776-201	Close Range 1850 Lumen	\$136.15
1GO 996 776-211	Long Range 1850 Lumen	



Q90C & Q110R

Combining a strong light output with practical design, the ideal LED reversing Spot Lamp.

2ZR 996 284-511	Reverse lamp	\$129.55
2ZR 996 285-501	Q110R reverse lamp	\$65.85



Powerbeam S- series Reverse Lamp

Delivering powerful illumination in a compact, rugged design.

2ZR 996 588-501		\$87.95
-----------------	--	---------



UltraBeam S Series

Classic work lamp with high performance and high light output.

1GA 995 706-001	Close range, 4400lm	\$202.30
1GA 995 706-011	Long range, 4400lm	



FMS Base & Prime

Reliable illumination with a slim profile and powerful even light distribution

1GB 996 098-001	1200lm Black	\$148.10
1GB 996 098-501	1200lm White	\$148.10
1GB 996 098-011	2500lm Black	\$194.35
1GB 996 098-511	2500lm White	\$194.35

HELLA QUALITY. THE DIFFERENCE IS IN THE DETAILS.

SURFACE COATING

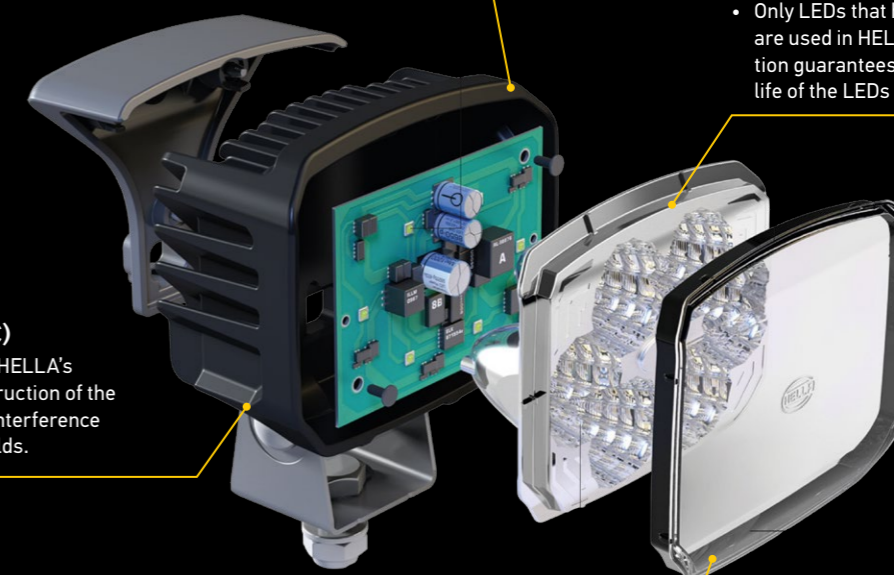
- High quality coatings protect the aluminum components of HELLA worklights from salt and chemicals

PREMIUM QUALITY LEDs

- Only LEDs that have undergone strict tests are used in HELLA worklights. The selection guarantees the extremely long design life of the LEDs of up to 60,000 hours.

ELECTROMAGNETIC COMPATIBILITY (EMC)

- The LED arrangement in HELLA's worklights and the construction of the reflector ensure that no interference occurs from magnetic fields.



LENS MATERIAL

- High quality, impact and scratchproof plastic.



Meritor® STEELite X30™ Brake Drum

Choose Meritor's genuine production drum for premium performance, durability, and value. Precision engineered and manufactured to the highest standards, it delivers superior balance, smoother ride, and increased payload capacity. With advanced corrosion protection, lightweight patented steel construction, and proven reliability, it's a smarter, longer-lasting solution built to perform.

53123537015	10 Stud X 285 PCD, 16.5" X 7"	\$299.00
--------------------	-------------------------------	-----------------



Meritor® Genuine Brake Shoe Kits

Meritor's MA2301 is the next generation of Meritor® OE heavy duty truck frictions. Developed with a modern chemistry to support RSD regulations, MA2301 offers exceptional friction stability allowing application from 23K to 29K GAWR (application dependent). With over a decade of proven field success, MA2301 is an excellent choice for construction, heavy haul, heavy duty linehaul, and specialty vehicles.

KSMA23014720QP	16.5" x 5" - 4720 Brake Lining	\$291.50
KSMA23014715QP	16.5" x 6" - 4715 Brake Lining	\$308.00
KSMA23014707QP	16.5" x 7" - 4707 Brake Lining	\$229.65



Meritor® Brake Camshaft (S-Cam)

To suit Q-Plus 1.5" x 28 Spline brake applications.

2210V7536FW	"Z" Camshaft Length 11.6" - Right Hand	\$54.70
2210W7537FW	"S" Camshaft Length 11.6" - Left Hand	
2210P7452	"Z" Camshaft Length 9.32" - Right Hand	\$102.55
2210Q7453	"S" Camshaft Length 9.32" - Left Hand	
2210Z7670	"Z" Camshaft Length 15.20" - Right Hand	\$119.80
2210A7671	"S" Camshaft Length 15.20" - Left Hand	
KIT8042	Brake Camshaft Repair Kit	\$40.05



Meritor® Genuine Automatic Slack Adjusters

R801079	Steer Axle - 1.5" X 28 Spline 5.5" Length (Chamber Size 20)	\$208.25
R801073	Drive Axle - 1.5" X 28 Spline 5.5" Length (Chamber Size 30)	\$272.50



Meritor® Genuine Drive Head Assembly

*Subject to Core Charge of \$1650 inc. GST, credited upon meeting terms & conditions of Meritor Core Management Process SOP #22-002

MP160	160 Series Forward Carrier (All Ratios)	\$9,253.30
MPL160	160 Series Forward Carrier with Driver Control Diff Lock (DCDL) (All Ratios)	\$9,690.40
MR160	160 Series Rearward Carrier (All Ratios)	\$5,003.65
MRL160	160 Series Rearward Carrier with Driver Control Diff Lock (DCDL) (All Ratios)	\$5,558.25



Hendrickson® Air Spring Assembly (Airbag)

57122-002	HAS 400/460/461	\$348.25
98734-096	HAS 200 (300mm Diameter)	\$531.00
60271-002	PRIMAAX® GEN II 230/460	\$366.40
98734-094	PRIMAAX® EX	\$574.40
60716-002	AIRTEK™ Steer Axle to suit Iveco/Dennis Eagle	\$341.50



Hendrickson® Universal Height Control Valve Kit

60826-000	Non-Dump & Multi-length Arm	\$130.95
60502-000-P	Dump Valve & Silencer	\$158.55



Hendrickson® Shock Absorbers

98583-074	HAS - Standard	\$75.90
60675-003-L	HAS - Hi-Torque™	\$182.00
98583-068	PRIMAAX® EX	\$155.60
98583-033	AIRTEK™ Steer Axle to suit Iveco/Dennis Eagle	\$182.25



Hendrickson® QUIK-ALIGN Pivot Bush Kit

60961-720	PRIMAAX® EX 1" Heavy Duty Bush (Single)	\$151.10
------------------	---	-----------------



Hendrickson® Main Support Spring Assembly

56946-000	Z' Spring - 2" Thickness to suit HAS 360/400/460	\$586.25
47417-007	U-Bolt 7/8" UNF x 15" (Single U-Bolt) to suit HAS 360/400/460	\$40.85



Hendrickson® Torque Rod Assembly

62000-555	555mm Length to suit HAS 230/400/460/461	\$195.90
58745-007	635mm Length Ultra Rod™ Plus to suit HAS & PRIMAAX EX (Heavy Duty Version)	\$344.95
60218-000	Adjustable Length 2-Piece Kit with Straddle Bush (Up to 680mm)	\$210.80



Hendrickson® INTRAAX® HXS™ Overhaul Brake Shoe Kit

S-23753-1	16.5" x 7" - 4707 Brake Lining	\$185.50
S-23754-1	16.5" X 8-5/8" - 4711 Brake Lining	\$208.20



Hendrickson® Brake Drums

98815-035	Light Weight Steel Drums	16.5" X 7" 10 Stud 285mm PCD	\$251.75
98815-036		16.5" X 8-5/8" 10 Stud 285mm PCD	\$271.75
98815-037	Standard Cast Drums	16.5" X 7" 10 Stud 285mm PCD	\$239.75
98815-038		16.5" X 8-5/8" 10 Stud 285mm PCD	\$299.75





ISUZU SERVICE AGREEMENTS

**Zero-stress servicing.
Brought to you by Isuzu.**

No business wants big, unexpected bills. But with an Isuzu service agreement, you can flatten your truck servicing costs into a predictable monthly payment (or upfront fee with Isuzu Essentials). You'll also be part of one of Australia's biggest dealer networks, so you can book a service at locations around the country. With the new Chain of Responsibility laws, proper servicing will protect your business. Lastly, service agreements come with Isuzu Care, Australia's most comprehensive truck customer care program.

To find out more, see your nearest dealer or visit isuzu.com.au/care-support/service-agreements.

- Isuzu Essentials
- Isuzu Essentials Plus
- Isuzu Total
- Isuzu Heritage



Ask your local Isuzu dealer about which service agreement is right for you.

GREASE & TOOLS

Workshop Equipment



ULTRAFLO Standard Pistol Grip Grease Gun

Standard duty grease gun that can develop pressures of up to 4,500PSI. It comes complete with a 300mm flexible outlet and a 4 jaw coupler.

AF-AP-1152-400	To suit 400g Grease Cartridge	\$85.80
AF-AP-1152-450	To suit 450g Grease Cartridge	\$83.10



ULTRAFLO Air Operated Grease Gun

High pressure grease gun with a continuous grease flow operation. It is capable of providing a delivery performance of up to 3800PSI.

AF-AP-1161	To suit 450g Grease Cartridge	\$190.00
------------	-------------------------------	-----------------



ULTRAFLO Grease Nipple Assortment Kit

AF-UF-4675	Imperial fittings	\$134.65
AF-UF-4676	Metric fittings	



RAASM Mobile Grease Distribution Kit

50:1 high-pressure grease pump, Flow Rate 1500g/min. Heavy Duty 3-Wheel Drum Trolley to suit 180kg/205L Drums. 10-year warranty on RAASM parts.

AF-0AMTKG3	4 metre dispensing hose	\$2,426.10
------------	-------------------------	-------------------



Only the best service and parts

Using a combination of the latest diagnostic software and Isuzu-approved parts, our qualified Isuzu technicians will keep your truck in tip-top condition.

Isuzu Care

Australia's most comprehensive truck customer care programme, Isuzu Care has a team of service specialists to ensure that owning your Isuzu is a great experience. To contact them, just freecall 1800 035 640.

Factory trained technicians

Why would you trust your Isuzu to anyone but an Isuzu-trained technician? With meticulous training tailored specifically to Isuzu trucks, our team carries out servicing and repairs to manufacturer-documented standards (and that means the highest level possible!).



Isuzu MP2 Long Life Grease

Isuzu MP2 Long Life Grease is suitable for a variety of automotive applications, including wheel bearing and general chassis lubrication, specially designed for extreme conditions. Blue coloured lithium complex grease which has been formulated to provide improved oxidation, wear protection and corrosion resistance compared to conventional greases.

92956074	450g Cartridge	\$12.50
92956075	20kg Drum	\$347.65
602285430	180kg Drum	\$2,506.10

TRAILER Meritor

Meritor® CS9 Air Springs & Shock Absorbers

Fitted to various Maxitrans Trailers

21229214	Air Spring Assembly	\$261.30
21228392	Shock Absorber - Low Mount	\$185.95
21228930	Shock Absorber - Top Mount	\$210.40



Meritor® Red Disc Brake Chambers

For BPW applications and tested to SAE J2932 & J2902 standards ensuring optimal reliability across applications. A heavy-duty powder coated housing for longer life. Includes release tool & mounting hardware for ease of installation.

MBC1424L	Size 14/24 2.25" Stroke - Left Hand Side (BPW 0544438020)	\$183.80
MBC1424R	Size 14/24 2.25" Stroke - Right Hand Side (BPW 0544438010)	
MBC1624L	Size 16/24 2.25" Stroke - Left Hand Side (BPW 0544440010)	\$85.60
MBC1624R	Size 16/24 2.25" Stroke - Left Hand Side (BPW 0544440020)	



Meritor® Disc Brake Pads

The new M550 friction material is designed for heavy-duty trucks, buses, and trailers, offering excellent braking at temperatures up to 500 °C with lower disc and pad wear. Meritor Premium pads feature advanced back plate and bonding technology, deliver reliable performance under stress, and reduce operating costs compared to standard aftermarket options. Each pad is marked with a "MER" batch code for traceability and comes ECE-R90 certified with all fitting kits included.



MAX087K	Knorr Bremse SB7000/SN7 to suit SAF, BPW ECO Plus, Hendrickson Intraax (TRP 908134)	\$165.00
MAX095K	Knorr Bremse SB6000/SN6 to suit BPW/SAF (TRP 0908142)	
MAX126K	Wabco Pan 19-1 to suit SAF Intradisc & K-Hitch KF26 axles (SAF 3057008000)	
MAX171K	Knorr Bremse SK7000/SB4309T - BPW ECO Plus SH & SKH Series Axles (BPW 0980108160)	

Meritor® Premium Brake Shoe Kits

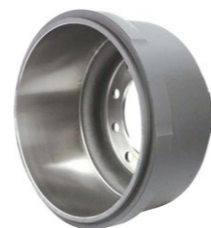
Meritor® MG2A Premium Brake Shoe Kits feature high-performance linings exceeding FMVSS 121 standards and are GAWR rated to 23,000lbs/10.5t. Steel rivets with oil coating provide secure attachment and reduce cracking risk. Assembled in Melbourne, Australia, each kit undergoes a seven-stage quality check for consistent quality. These kits offer optimal stopping power, extended brake life, and lower maintenance costs. All components meet Meritor standards and are designed for advanced performance. Each kit contains two lined brake shoes and hardware for one wheel end.



BVPMG2ABC3695	420mm x 180mm BPW Brake 95 (Brake Lining BC/36/1)	\$98.90
BVPMG2A4515F3	16.5" X 7" Quick-Change Fruehauf/SAF/TMC (Brake Lining 4515F)	\$104.85
BVPMG2A4515PSS	16.5" X 7" P-Type General Purpose Trailer Axles (Brake Lining 4515P) - Smooth Rollers	\$99.60
BVPMG2A4515PSSK	16.5" X 7" P-Type General Purpose Trailer Axles (Brake Lining 4515P) - Knurled Rollers	\$101.70
BVPMG2A4515Q	16.5" X 7" Quick-Change General Purpose Trailer Axles (Brake Lining 4515Q)	\$97.35
BVPMG2A4707QP	16.5" X 7" Q-Plus General Purpose Trailer Axles (Brake Lining 4707QP)	\$95.40

Meritor® Opti-Cast Brake Drums

BVP85123788002	Drive & Trailer Axle 16.5" x 7" 10 Stud 285mm PCD (General Purpose)	\$147.00
----------------	---	----------



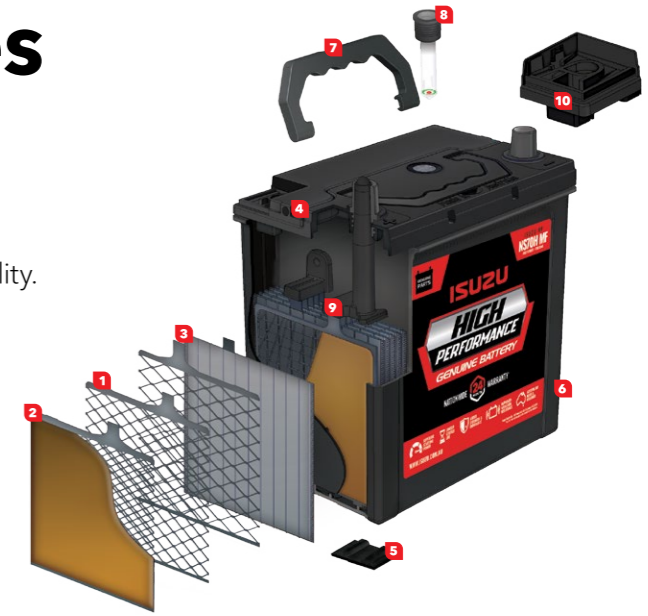
ISUZU

Genuine Batteries

The Isuzu Battery Difference

Isuzu's range of sealed maintenance free batteries are designed and manufactured to the highest quality standards, ensuring exceptional performance and reliability.

- 1 ROTARY PLATES
- 2 ENHANCED PLATE PASTE
- 3 SEPARATORS
- 4 FLAME ARRESTOR
- 5 MUD RACK
- 6 POLYPROPYLENE CASE
- 7 CARRY HANDLE
- 8 STATE OF CHARGE INDICATOR
- 9 CAST ON STRAP
- 10 LABYRINTH LID TECHNOLOGY



Genuine Batteries

CYB123841	N-Series NS70 12V 650CCA Maintenance Free	\$215.00
CYB123842	N-Series NS70L 12V 650CCA Maintenance Free	
CYB125840	F-Series N100 12V 740CCA Maintenance Free	\$275.00
CYB125842	F-Series N100L 12V 740CCA Maintenance Free	

Battery Testers

CYB191022	BATTERY TESTER; BT900	\$580.15
CYB191013	BATTERY TESTER; MDX P300CY	\$1,569.60
CYB191021	BATTERY TESTER; MDX 658 CY	\$1,026.70

Midtronics Testers

Product Type	Application	Testing Range	Battery Type	Special Features
MDX-658P	Passenger Vehicle, Motorcycle, Light Truck, Lawn & Garden, Marine Cranking	100 to 2000 CCA	Flooded, AGM, GEL, ISS & Auxiliary Hybrid	Idle Stop Start & Auxiliary Battery Testing Integrated Printer
MDX-P300	Passenger Vehicle, Light Truck	100 to 1400 CCA	Flooded, AGM, GEL & ISS	Integrated Printer

DHC Testers

Product Type	Application	Testing Range	Battery Type	Special Features
BT900	Passenger Vehicle, 4x4, Lawn & Garden, Truck, Marine Cranking, Motorcycle	40 to 2000 CCA (SAE)	Flooded, AGM, VRLA, Gel, and ISS (EFB, AGM)	12v Battery Testing 12V & 24V Starting & Charging System Testing Integrated Printer



Genuine Parts.

A big part of Isuzu reliability.

Every Isuzu truck is the sum of its parts, so it makes sense to use parts you can rely on. Isuzu Genuine Parts are expertly designed, manufactured and precision-made for your truck, helping to protect your investment and your business. And with a 3-year warranty and a nationwide dealer network, you're covered wherever and whenever you need support.

Isuzu Genuine Parts.



All Makes

REDARC® Tow-Pro Elite Electric Trailer Brake Controller

Tow-Pro Elite is Australia's leading trailer brake controller, offering automatic and user-controlled modes for safe towing on all terrains. Its hidden installation suits modern vehicles, supports 12/24 volt systems, and works with AL-KO ESC/DSC. Manual override helps prevent trailer sway for confident, smooth towing.

EBRH-ACCV3	To suit most makes & models of commercial vehicles with 12 or 24 Volt systems	\$284.25
-------------------	---	-----------------

REDARC® Hand Brake Alarm

The REDARC Handbrake Alarm is used to monitor the handbrake switch and doorframe switch, providing audible and visual warning if the door is opened while the handbrake is not applied.

HBA1224	Hand Brake Alarm 12-24 Volt	\$171.15
HBAKIT-001	Connector Kit - to suit HBA1224	\$15.00

Eaton® PS-386 Synthetic Transmission Oil & Filters

To suit Eaton Roadranger Transmissions

5564543	18 Litre Drum - Synthetic Transmission Oil	\$591.80
4304827	Oil Filter Element	\$37.95
17237	Oil Filter Element (Chassis-mounted)	\$35.20

Eaton® Advantage Easy-Pedal™ Clutch Assembly

Offering more protection, less maintenance, and maximum uptime and performance. With the use of assist springs, the Easy-Pedal™ design reduces pedal effort by as much as 50%, increasing driver satisfaction and ease of operation.

308935-529	2" 10-Spline 2050 Lb. Ft.	\$1,887.30
308935-515	2" 10-Spline 2050 Lb. Ft. Pre-Damper	\$2,197.60
308938-556	2" 14-Spline 2250 Lb. Ft.	\$2,697.80
308938-583	2" 14-Spline 2250 Lb. Ft. Pre-Damper	\$2,732.95

Eaton® Clutch Installation Kits

K-2468CL	RT Series with 10-Spline Input Shaft	\$408.10
K-3768CL	RT Series with 14-Spline Input Shaft	\$456.95
K-4125CL	RT Series with Hydraulic Clutch Release	\$578.75

STEMCO GAFF® Torque Rod Bushing

To suit Hendrickson HAS, Kenworth Airglide, Freightliner/Western Star Air Ride (47691-000-L)

13521	RT Series with 10-Spline Input Shaft	\$65.30
11004	RT Series with 14-Spline Input Shaft	\$74.25

Fleetguard® 4WD Filter Kits

Includes Oil, Fuel & Air Filter

MK14283	Toyota Hilux GUN123R/126R/136R/122R/125R with 2.4L & 2.8L Turbo Diesel Engine (1GD-FTV) MY2015-Onwards	\$68.05
MK13940	Toyota Landcruiser 200 Series VDJ200 with 4.5L V8 Turbo Diesel Engine (1VD-FTV) MY2007-Onwards	\$68.55
MK13458	Toyota Landcruiser 70 Series VDJ76R/78R/79R with 4.5L V8 Turbo Diesel Engine (1VD-FTV) MY2007-Onwards	\$60.30
MK14280	Ford Ranger (PX), Everest (UA) Mazda BT-50 (UP0Y) with 2.2L & 3.2L Turbo Diesel Engine MY2011-Onwards	\$63.70
MK14314	RAM Truck 2500/3500 with Cummins ISB 6.7 I6 Turbo Diesel Engine MY2013-Onwards	\$281.35

REDARC



EATON



STEMCO



Fleetguard



Ultima MK3 LED Driving Lights

NARVA®

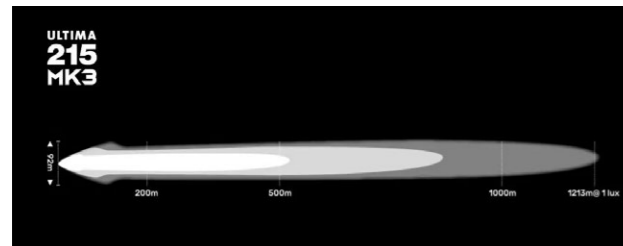
THE VISION TO GO FURTHER

**Up to 20% brighter.
100% more control.**

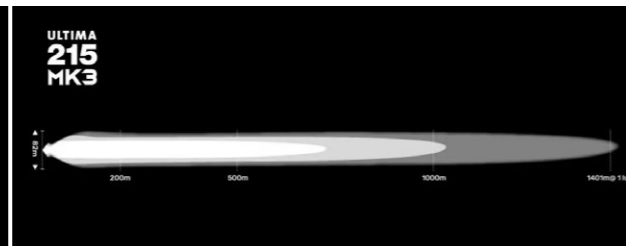
The Ultima MK3 range boasts up to 20% more output, while seamless integration with the Ultima Connect+ Controller means you can fine-tune your light intensity and beam shape with precision for optimal visibility in every driving scenario.

Engineered for control

The innovative Ultima Connect+ Controller (sold separately) allows you to take full command by tailoring the light intensity and beam shape of your Ultima MK3s to suit any driving conditions. Whether you need added distance, spread, or even a power boost, you can easily preset and adjust your settings for maximum visibility.



Ultima 215 MK3 hybrid beam options



Ultima 215 MK3 spot beam options

Engineered for performance

Ultima MK3s broad, penetrating 5700°K white light offers superior visibility without dark or hot spots. Outputting 20% more effective lumen figures than the previous MK2 model, once connected to an Ultima Connect+ Controller they'll deliver an additional 10% on top of that in boost mode.

Engineered for durability

Ultima MK3 driving lights are built to endure the harshest environments with robust construction in the form of a single piece pressure die-cast housing, and virtually unbreakable UV-resistant hard-coated polycarbonate lenses and lens protectors.

Engineered for you

Crafted with Narva's signature style, Ultima MK3s match the latest Ultima light bar range and allow you to customise their look to suit your vehicle. Select between satin or black bezels, 7 interchangeable trim colours and clear, dark tint, or 'Selective Yellow' protectors to enhance performance and aesthetics. Ultima MK3 driving lights come with a pre-selection of customisation accessories in the box and additional accessories are available for free via redemption.



NARVA® ULTIMA MK3 LED DRIVING LIGHTS

71742	ULTIMA 215 - HYBRID BEAM (INDIVIDUAL LIGHT)	\$524.00
71745	ULTIMA 215 - SPOT BEAM (INDIVIDUAL LIGHT)	\$524.00
71744	ULTIMA 215 HYBRID LED BEAM KIT (2 X SPOT BEAM LIGHTS & MOUNTING HARDWARE, 1 X PLUG & PLAY WIRING HARNESS)	\$1,124.70
71748	ULTIMA 215 HYBRID LED BEAM TRANSPORT KIT (2 X SPOT BEAM, 2 X HYBRID BEAM & MOUNTING HARDWARE, 1 X WIRING HARNESS, 1 X ULTIMA CONNECT+ CONTROLLER)	\$2,549.25



1. Clear Uv-Resistant Hard-Coated Polycarbonate Lens And Lens Protector
2. Interchangeable Colour Trims (Electric Blue Shown)
3. 5 Watt Osram Leds
4. Led Front Position Light
5. Interchangeable Black Or Satin Bezel (Black Shown)
6. 6 Pin Deutsch® Connector On 500mm Flying Lead
7. Gore-Tex® Breather Vent Breather Vent
8. Three Bolt Mounting With Stainless Steel Hardware
9. Pressure Die-Cast Aluminium Housing
10. Pressure Die-Cast Mounting Bracket
11. Tool Free Vertical Adjustment
12. Polyurethane Mounting And Suspension System

Specifications Comparison

	ULTIMA MK3 215 SATIN HYBRID BEAM SINGLE	ULTIMA MK3 215 SATIN SPOT BEAM SINGLE	ULTIMA MK3 215 SATIN TRANSPORT KIT	ULTIMA MK3 215 BLACK HYBRID BEAM K
IP Rating:	IP68 + IP69K	IP68 + IP69K	IP68 + IP69K	IP68 + IP69K
Current Draw:	14.9A at 13.5V	20.6A at 13.5V	71A at 12V	29.8A at 13.5V (Pair)
Design Registration Number:	201610579	201610579	201610579	201610579
Effective Lumens (per lamp):	18,092Lm/19,012Lm (Boost)	18,748Lm/20,157Lm (Boost)	73,680Lm/78,338Lm (Boost)	18,092Lm/19,012Lm (Boost)
Colour Temperature:	5700°K	5700°K	5700°K	5700°K
Operating Temperature:	-40°C to +65°C	-40°C to +65°C	-40°C to +65°C	-40°C to +65°C
LED type:	5W Osram	10W Cree	5W Osram/	
10W Cree	5W Osram			
Part Number:	71742	71745	71748	71744
Supersedes:	71740S, 71740BK			71742BK
Operating Temperature:	-40°C to +65°C	-40°C to +65°C	-40°C to +65°C	-40°C to +65°C
LED type:	5W Osram	10W Cree	5W Osram/	
10W Cree	5W Osram			
Part Number:	71742	71745	71748	71744
Supersedes:	71740S, 71740BK			71742BK



NARVA® LED WORK LAMP FLOOD BEAM

Compact work lamp with 5W flood beam LED's. Fully sealed (IP66) with a pre-wired die-cast powder coated aluminium housing.

72446	2 X LED BEAMS - 1000 LUMENS	\$101.05
72449	4 X LED BEAMS - 2000 LUMENS	\$135.25



NARVA® OPTIMAX LED ROTATING BEACONS

Optimax LED beacons are engineered to produce smooth, highly visible rotating patterns suitable for all civil applications. This has been achieved by a proprietary reflector optic to spread the light combined with 6 x 5 watt high power LEDs. This output ensures Optimax LED Beacons meet Heavy Vehicle Regulation 2013 No.77. This extreme output also makes the Optimax beacon range as visible even as traditional halogen beacons with 55W (or 70W) globes with a fraction of the current draw.

85660A	AMBER WITH FLANGE BASE	\$76.45
85668A	AMBER WITH MAGNETIC MOUNT	\$107.05



SCAN THE QR CODE FOR THE FULL RANGE OF NARVA PRODUCTS

Isuzu Legacy

Isuzu has a comprehensive range of parts to suit older model Isuzu Trucks, all manufactured to high standards and backed by a 12-month, unlimited kilometre parts warranty. Reliability is Everything!

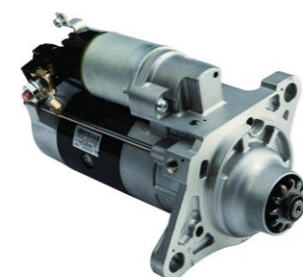
Cooling System

8981984631	Water Pump	N series 03-07	\$289.55
8971487970	Engine cooling fan clutch	N series 03-07	\$419.70



Engine & Engine Components

92955207	Engine Rebuild kit	4HF1 05/98-12/00	\$1,777.10
92955210	Engine Rebuild kit	4HG1 SiTEC I 115 01/01-	\$1,821.80
92955212	Engine Rebuild kit	4HG1-T SiTEC I 120 01/01-	\$1,610.05
92955213	Engine Rebuild kit	4HE1-T	\$2,077.15
92955214	Engine Rebuild kit	4HE1-TC SiTEC I 130/140/145/170	\$1,801.45
8971489601	Injection Nozzle	N series w/4HE1 engine	\$181.00
8980853126	Oil Cooler Assembly	N series w/4HE1 engine	\$1,258.50
8981403190	ERG Valve	N series w/4HE1 engine	\$213.55
8982452592	Starter Motor	N series w/4HE1 engine	\$1,247.75
5876102050	Alternator	N series w/4HE1 (SiTEC 140) 11/2002 - On	\$498.95



Clutch & Brake Components

8983334210	Exhaust brake unit	N series 03-07	\$556.75
8981176392	Clutch Master Cylinder	N series 03-22	\$110.60
8973494240	Clutch Slave cylinder	N series 03-07 w/MYY manual	\$118.15
5878317750	Brake shoe set (axle set)	N series 03-07	\$340.00
8972243700	Brake Master cylinder	N series 03-07	\$541.25
8971628001	Brake Vacuum booster	N series 03-07	\$891.20



Driveline, Steering & Suspension Components

8971079870	Power steering reservoir	N series 03-07	\$117.55
8983810050	Front Shock Absorber	N series 03-07	\$174.75
8983024730	Rear Shcok Absorber	N series 03-07	\$102.15
5878324001	King pin kit	N series 03-07	\$370.20
8972225100	LH Tie rod end	N series 03-07	\$93.45
8972225090	RH Tie rod end	N series 03-07	\$93.45



Panels

8978916811	Radiator Grille	N series 03-07	\$438.15
8979990140	Front Bumper	N series 03-07	\$435.55
8973669881	Front mud guard LH	N series 03-07	\$78.60
8970487283	Front mud guard RH	N series 03-07	\$78.60
8978929033	Door seal LH	N series 03-07	\$188.20
8978929023	Door seal RH	N series 03-07	\$188.20
8978921002	Door lock LH	N series 03-07	\$117.15
8978921022	Door lock RH	N series 03-07	\$147.60
8978984800	Window motor LH	N series 03-07	\$132.75
8978984790	Window motor RH	N series 03-07	\$132.75



Accessories

92143017	Weathershield LH	N series 96-07	\$92.45
92143018	Weathershield RH	N series 96-07	\$92.45
1884334040	Rubber Floor Mat Set	NP/NQ 94-07	\$193.30
92955412	Dash mat	NP/NQ 94-07	\$117.20



**ENTER THE
DRAW TO WIN!**
**ISUZU
ARCADE
BARREL**



When you purchase 20L or more of Isuzu Genuine Lubricants in a single transaction from an Authorised Isuzu Trucks Dealer.



Scan the QR CODE and have your proof of purchase on hand to enter the draw to WIN!

FEATURING OVER 60 CLASSIC ARCADE GAMES!

To be eligible for entry, customers must purchase a minimum of 20 litres of eligible Isuzu Genuine Lubricants branded with ISUZU in a single transaction from an authorised Isuzu Trucks Dealer during the promotional period from 1 July 2026 to 30 September 2026. Dealer locations can be found at www.isuzu.com.au/find-a-dealer/. For a full list of eligible product numbers, customers should refer to the competition Terms and Conditions available at www.isuzu.com.au/our-range/parts/all-parts/lubricants/. Eligible customers will receive one entry per tax invoice number. There is no limit to the number of entries, provided each entry is supported by a separate eligible tax invoice. Entry is only valid when submitted via the QR code provided as part of this promotion. All mandatory fields in the entry form must be completed for an entry to be accepted. The prize pool consists of 1 Isuzu Genuine Lubricants Arcade Game Console Units valued at \$2,445 incl GST each.

ISUZU MERCHANDISE
Heritage

Isuzu's all new merchandise collection is crafted specifically for dedicated Isuzu Truck customers. The Heritage collection pays homage to Isuzu's extensive history by offering nostalgic products adorned with iconic emblems that represent its legacy since 1916.



Heritage Crest T-Shirt White
(Sizes S-3XL)
92959319 - 324
\$36.85



Heritage Diesel T-Shirt Blue
(Women Sizes 8-18/Men Sizes S-3XL)
92959326 - 337
\$30.70



Heritage TX80 T-Shirt Black
(Men Sizes S-3XL)
92959338 - 343
\$38.70



Heritage TX80 Hoodie Black
(Sizes S-3XL)
92959344 - 349
\$71.65



Heritage Sweater Black
(Sizes S-3XL)
92959313 - 318
\$51.00



Heritage Cooler Bag
92959350
\$43.15



Heritage Drink Bottle
92959353
\$39.40



Heritage Duffle Bag (Red)
92959351
\$50.85



Heritage Logo Keyring
92959309
\$12.55



Heritage Magnet Set (4)
92959311
\$15.75



Heritage Sticker Sheet
92959312
\$13.00



Heritage Stripe Socks
92959325
\$22.50



Isuzu Diesel Bucket Hat
92959355
\$23.20



Heritage Curve Peak Distressed Cap
92959356
\$29.95



Heritage Towelling Bucket Hat (Blue)
92959357
\$35.30



Heritage Curve Peak Washed Cap (Navy)
92959358
\$28.35

Load Restraint 101: Understanding Your Requirements Across Australia

Load restraint is not exactly a topic that gets pulses racing. But in road transport, it is one of the most critical factors separating a routine trip from a serious incident.

Every day, heavy vehicles on Australian roads transport freight, machinery, construction materials and agricultural products. When loads are not properly restrained, the consequences can be severe, affecting drivers, businesses and other road users.

For fleet managers, operators and drivers, load restraint is about more than compliance—it is about safety, accountability and protecting your operation.

What is load restraint?

Load restraint refers to the systems and methods used to prevent a load from moving, shifting, falling or becoming dislodged during transport.

Under the Heavy Vehicle National Law (HVNL), a heavy vehicle must be loaded in a way that:

- Does not make the vehicle unsafe or unstable
- Prevents the load from falling or being dislodged
- Uses an appropriate and effective restraint system

In practice, loads must remain secure during normal driving conditions, including braking, acceleration, cornering and emergency manoeuvres.

Why load restraint matters

Poor load restraint can have serious consequences. Unrestrained loads may:

- Fall from vehicles and strike other road users or pedestrians
- Cause drivers to swerve or lose control
- Shift during braking and impact the vehicle cabin
- Destabilise vehicles and contribute to rollovers

Beyond safety risks, inadequate restraint can result in damaged freight, vehicle repairs, insurance claims, downtime and reputational damage.

Legal responsibilities

Load restraint is a legal requirement under the HVNL and forms part of the Chain of Responsibility (CoR).

Responsibility does not sit solely with the driver. Any party with influence over the transport task may be held accountable, including:

- Employers and operators
- Loaders and packers
- Consignors and consignees
- Schedulers and managers

All parties must take reasonable steps to ensure loads are secured safely and legally.

While most Australian jurisdictions operate under the HVNL, Western Australia and the Northern Territory have separate legislation with equivalent requirements. Operators travelling interstate should ensure they understand the applicable rules.

Penalties for non-compliance

Failure to properly restrain a load can lead to:

- On-the-spot fines
- Court-imposed penalties
- Demerit points
- Vehicle defect notices or grounding
- Prosecution under CoR laws

In cases involving serious injury or death, penalties may include enforceable undertakings or imprisonment

Designing an effective restraint system

The HVNL focuses on achieving a safe outcome rather than prescribing a single restraint method.

Key principles include:

- Using a vehicle suitable for the load
- Positioning the load to maintain vehicle stability
- Using restraint equipment that is fit for purpose and well maintained
- Ensuring equipment is appropriately rated
- Providing clear loading procedures and instructions

Where uncertainty exists, operators should consult the NHVR Load Restraint Guide or seek advice from a qualified engineer or load restraint specialist.

Making load restraint routine

For transport businesses, load restraint should be a standard part of daily operations, not an afterthought

Strong load restraint practices improve safety, reduce product loss, minimise downtime and help protect both people and assets. While it may not be the most exciting aspect of transport, it remains one of the most important.

Ancra® Winches with Straps

4920320	Slide-On Winch with 50mm x 9m Strap	\$58.55
4356420	Clip-On Winch with 50mm x 9m Strap	\$74.75
4920320RC	Slide-On Ratchet Cap Winch with 50mm x 9m Strap	\$81.50
4356420RC	Clip-On Ratchet Cap Winch with 50mm x 9m Strap	\$95.55
4165910A	Replacement Strap 50mm x 9m	\$14.25
4231310	Straight Winch Handle with Grip - 550mm Long	\$15.70

Ancra® Ratchet Tie-Downs

Hook & Keeper end fittings.

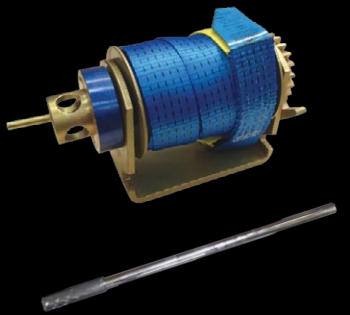
4455775MTR	25mm x 5m Ratchet Tie Down Strap (Lashing Capacity 750kg)	\$8.95
5004176MTR	35mm x 6m Ratchet Tie Down Strap (Lashing Capacity 1,500kg)	\$14.45
5000012	50mm x 9m Ratchet Tie Down Strap (Lashing Capacity 2,500kg)	\$17.75
500001211MTR	50mm x 11m Ratchet Tie Down Strap (Lashing Capacity 2,500kg)	\$20.35
7500012EDGE	75mm x 9m Ratchet Tie Down Strap (Lashing Capacity 5,000kg)	\$59.80

Ancra® Loadbinders & Grade 70 Chain Kits

LB0302	8mm-10mm Ratchet Loadbinder with Grab Hooks	\$41.85
4979610	8mm-10mm Loadbinder with Grab Hooks	\$29.60
405528MM9MGH	Chain Kit 8mm x 9m with Winged Grab Hooks (Grade 70)	\$86.65
4055210MM9MGH	Chain Kit 10mm x 9m with Winged Grab Hooks (Grade 70)	\$120.60

Ancra® Pallet Angles

FLCP40001040MM	1040mm - Tiedown Strap type	\$15.75
3478L	130mm - Chain type	\$17.75





ISUZU TRUCKS

Dealer Network

Isuzu has the largest truck dealer network in the country, with all 75 locations providing the highest quality Genuine Parts, backed by industry-leading support and warranty. This all means reduced downtime for our customers, freeing them up to focus on the important stuff. And when the parts are fitted by an authorised Isuzu technician, you'll be helping extend the working life of your truck and getting peace-of-mind that money just can't buy. Because reliability is everything!



Scan the QR Code to find your nearest Isuzu Trucks dealer.

-  Dealer/Branch
-  Authorised Service & Parts Outlet



Prices published are recommended selling prices, include GST and are effective 1st July 2026 until 30th September 2026. While stocks last. Images are for illustrative purposes only. All parts advertised have been included in good faith and on the basis that those parts will be available at participating Isuzu Dealerships at the time of publication. Isuzu and participating Dealers reserve the right to correct any errors made in parts listed and/or the pricing published.